

# KLIMCHI

KLIMCHI COLLECTIONS

2024/2025

[WWW.KLIMCHI.COM](http://WWW.KLIMCHI.COM)



**KLIMCHI's heart and soul is  
dedicated to handcrafting  
beautiful glassware for the  
moments in life we want to  
hold onto. The breath-taking.  
The heartbreaking.  
The astonishing. The  
beautiful. As we imbue our  
designs with a curiosity and  
passion for life, our vision is  
to create contemporary glass  
art that will become part of  
your own story.**

# Klimchi Studio

Nestled in the 'Crystal Valley' mountain region of the Czech Republic, the kilns of KLIMCHI studios have been used by glass artisans to sculpt Bohemian crystal since 1905. It was then 2019 when entrepreneur Lukas Klimcak brought new life to the workshops. Inspired by the dramatic landscape of the region, Lukas and his new team now bring an exciting and youthful vision to his family's tradition of handmade glass production.

Since 2020, KLIMCHI has fast become known across the globe for its exclusive and dynamic collections, created under the guidance of creative director Frantisek Jungvirt. A renowned glass artist, Frantisek has pushed KLIMCHI's designs to rediscover and popularise techniques that have been forgotten, inspiring a new generation of art lovers and designers. Thus, the ancient art of glass blowing and historical decors tell a new story of the young KLIMCHI brand with minimalist modern design and dynamic pigments.



# The Roots From Which We Grow

Since the founding of our factory, all KLIMCHI glassware is hand-produced in the Bohemian city of Kamenický Šenov, a place widely revered as the cradle of world-renowned glass manufacture. Bohemian crystal ensures a hallmark of quality and glass artisanship hard to find anywhere else.

In 1905, the KLIMCHI glass factory we still use today was built by none other than the same French engineers who constructed the Eiffel Tower. Their steel design forms the core infrastructure of the main factory and even after more than 100 years it is considered one of the most historical and beautiful buildings in the region.

"The history of Czech glassmaking runs deep and I like the feeling that we are continuing its legacy. For me, it was very important for KLIMCHI to be strongly connected with the roots and spirit of its home, the people and their craft." – Lukas Klimcak, owner of KLIMCHI.

We keep the name of our founder Antonín Jilek on our factory chimney to commemorate the principles he stood for; creating timeless pieces of outstanding quality in close cooperation with the glass artisans themselves.



# **The Tradition of The Glass Artisan**

**We are not interested  
in saving time through  
commercial machine  
manufacture. We believe  
that the time we spend with  
each piece and the years of  
knowledge invested into every  
curve tells a deeper story.**





**LUKAS KLIMCAK**  
**FOUNDER**

Preserving the legacy of glassmaking and celebrating the true artistry of the craft is the vision that inspired the young entrepreneur Lukas Klimcak to found Czech Republic-based glassware brand KLIMCHI. Whilst studying to become a Master of Science in Lighting Design from the prestigious University College London, Lukas worked with several British design studios. Since his return to KLIMCHI in 2019, Lukas hopes to ignite in his customers the same passion and nostalgia towards Bohemian handmade glassware as he feels.



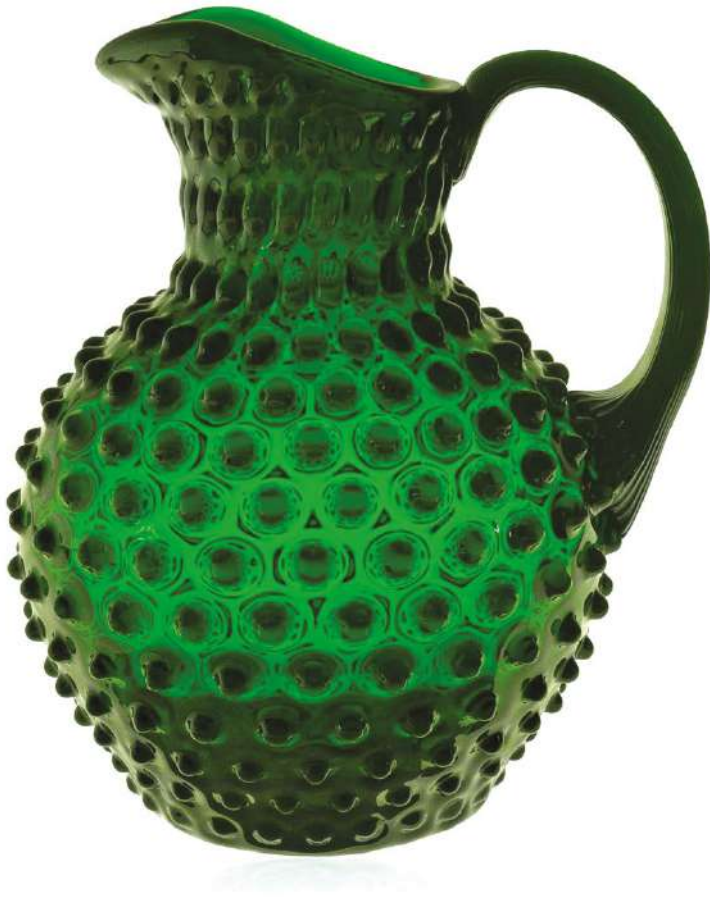
**FRANTISEK JUNGVIRT**  
**CREATIVE DIRECTOR**

Pushing the boundaries of glassmaking. Frantisek Jungvirt is a young Czech designer who recently completed his studies at the Academy of Arts, Architecture and Design in Prague. His experience includes working for well known glass brands as well as private clients. A rising talent in the world of contemporary glass art, Frantisek joined the hardworking team of KLIMCHI in 2020. Since then, the brand has introduced several award-winning collections that found a place in interiors of many satisfied customers worldwide.

**The most colourful portfolio.  
Classic design that  
never goes out of fashion.  
Cherishing the traditional  
techniques, coming  
in strikingly  
beautiful shades.**



# Hobnail Collection



An eternal classic. The Hobnail evokes an ageless vintage style that enchants the eye with its unique and bold design. Originating from KLIMCHI's family-run glass factory, every piece is ethically produced using inherited artisan techniques. The collection features wide colour and product range, every piece handblown from high-quality lead-free glass. Scattering light in the most spectacular way, the Hobnail range inspires glass lovers all year round.



**A signature collection  
of Hobnail glass creates**



**a combination  
of contemporary  
and retro feel to your  
environment.**

JUGS

Volume: 2000 ml • 67.6 oz  
Diameter: 20 cm • 7.9 in  
Height: 22 cm • 8.7 in  
Weight: 2 kg • 4.4 lbs  
Code: 16184/2000



SMALL JUGS

Volume: 1000 ml • 33.8 oz  
Diameter: 18 cm • 7.1 in  
Height: 18 cm • 7.1 in  
Weight: 1 kg • 2.2 lbs  
Code: 16184/1000



### CREAMER JUGS

Volume: 500 ml • 16.9 oz  
Diameter: 13.5 cm • 5.3 in  
Height: 14.5 cm • 5.7 in  
Weight: 700 g • 1.5 lbs  
Code: 16184/500



### TALL JUGS MINI

Volume: 350 ml • 11.8 oz  
Diameter: 12 cm • 4.7 in  
Height: 14 cm • 5.5 in  
Weight: 700 g • 1.5 lbs  
Code: 16185/350



### CARAFES

Volume: 2000 ml • 67.6 oz  
Diameter: 19 cm • 7.5 in  
Height: 25 cm • 9.8 in  
Weight: 2 kg • 4.4 lbs  
Code: 16143/2000



### TUMBLERS

Volume: 200 ml • 6.8 oz  
Diameter: 7.5 cm • 3 in  
Height: 12 cm • 4.7 in  
Weight: 260 g • 0.6 lbs  
Code: 21013/200





### TALL TUMBLERS

Volume: 400 ml • 13.5 oz

Diameter: 7.5 cm • 3 in

Height: 16 cm • 6.3 in

Weight: 300 g • 0.7 lbs

Code: 21013/400



### GOBLETS

Volume: 300 ml • 10.1 oz

Diameter: 7.5 cm • 3 in

Height: 16 cm • 6.3 in

Weight: 350 g • 0.8 lbs

Code: 41013/300



### BOWLS

Volume: 2600 ml • 87.9 oz

Diameter: 23 cm • 9.1 in

Height: 9 cm • 3.5 in

Weight: 1 kg • 2.2 lbs

Code: 5132/23



### SMALL BOWLS

Volume: 200 ml • 6.8 oz  
Diameter: 11.5 cm • 4.5 in  
Height: 7 cm • 2.8 in  
Weight: 300 g • 0.7 lbs  
Code: 5132/11



### VASES

Volume: 1800 ml • 60.9 oz  
Diameter: 18 cm • 7.1 in  
Height: 16 cm • 6.3 in  
Weight: 1.2 kg • 2.6 lbs  
Code: 8460/18



### LARGE VASES

Volume: 4800 ml • 16 oz  
Diameter: 25 cm • 9.8 in  
Height: 20 cm • 7.9 in  
Weight: 1.5 kg • 3.3 lbs  
Code: 8460/25



**EGG VASES**

Volume: 3000 ml • 101.4 oz  
Diameter: 15 cm • 5.9 in  
Height: 23 cm • 9.1 in  
Weight: 1.2 kg • 2.6 lbs  
Code: 8215/23



**TALL JUGS**

Volume: 1000 ml • 33.8 oz  
Diameter: 17 cm • 6.7 in  
Height: 27 cm • 10.6 in  
Weight: 1.5 kg • 3.3 lbs  
Code: 16185/1000





## CANDLES

Volume: 220 ml • 7.4 oz  
Diameter: 9.8 cm • 3.9 in  
Height: 10 cm • 4 in  
Weight: 880g • 1.9 lbs  
Code:1223/10



## LARGE CANDLE HOLDERS

Volume: 950 ml • 24 oz  
Diameter: 12 cm • 4.7 in  
Height: 14 cm • 5.5 in  
Weight: 940 g • 3.3 lbs  
Code: 1222/14



## CANDLE HOLDERS

Volume: 350 ml • 7.4 oz  
Diameter: 10 cm • 3.9 in  
Height: 10 cm • 3.9 in  
Weight: 720 g • 2 lbs  
Code: 1222/10



## COLLAR VASES

Volume: 3000 ml • 101.4 oz  
Diameter: 18 cm • 7.1 in  
Height: 20 cm • 7.9 in  
Weight: 1.5kg • 3.3 lbs  
Code: 84051/18



## SQUARE JUGS

Volume: 2000 ml • 67.6 oz  
Diameter: 19 cm • 7.5 in  
Height: 25 cm • 9.8 in  
Weight: 2 kg • 4.4 lbs  
Code: 16144/2000



# Shadows Collection

DESIGNED BY CREATIVE DIRECTOR  
FRANTISEK JUNGVIRT



Bare, beautiful and effortlessly chic, SHADOWS offer a minimalistic edge with a modern twist. Consisting of eight designs, the collection is available in four lavish colours and one exclusive gold-rimmed line for those who enjoy a finer dining experience with signature pieces. Taking decorative elegance to the next level, all pieces are hand-blown and hand-polished in the company's workshop, making every piece an original.



**CARAFES**

Volume: 1400 ml • 47.3 oz  
Diameter: 14 cm • 5.5 in  
Height: 25 cm • 9.8 in  
Weight: 2 kg • 4.4 lbs  
Code: 2021/1400



**HIGH BALL GLASSES**

Volume: 350 ml • 11.8 oz  
Diameter: 10.3 cm • 4.1 in  
Height: 12.5 cm • 4.9 in  
Weight: 300 g • 0.7 lbs  
Code: 2022/350



**DRINKING GLASSES**

Volume: 200 ml • 6.8 oz  
Diameter: 9 cm • 3.5 in  
Height: 9 cm • 3.5 in  
Weight: 200 g • 0.4 lbs  
Code: 2024/200



**ESPRESSO CUPS**

Volume: 55 ml • 1.9 oz  
Diameter: 6.5 cm • 2.6 in  
Height: 6.5 cm • 2.6 in  
Weight: 60 g • 0.1 lbs  
Code: 2025/55



## VASES

Volume: 1100 ml • 37.2 oz  
Diameter: 13.5 cm • 5.3 in  
Height: 22.5 cm • 8.9 in  
Weight: 2 kg • 4.4 lbs  
Code: 2020/22.5



## LARGE BOWLS

Volume: 1700 ml • 57.5 oz  
Diameter: 22.5 cm • 8.9 in  
Height: 14.5 cm • 5.7 in  
Weight: 2.5 kg • 5.5 lbs  
Code: 2026/22.5



## MEDIUM BOWLS

Volume: 600 ml • 20.3 oz  
Diameter: 15.8 cm • 6.2 in  
Height: 11 cm • 4.3 in  
Weight: 1.2 kg • 2.7 lbs  
Code: 2027/16



## SMALL BOWLS

Volume: 200 ml • 6.8 oz  
Diameter: 10.5 cm • 4.1 in  
Height: 7.5 cm • 3 in  
Weight: 250 g • 0.6 lbs  
Code: 2028/10.5



# Shadows Stemware

DESIGNED BY CREATIVE DIRECTOR  
FRANTISEK JUNGVIRT



#### CHAMPAGNE GLASSES

Volume: 230 ml • 7.8 oz  
Diameter: 7.7 cm • 3 in  
Height: 25.5 cm • 10 in  
Weight: 100 g • 0.2 lbs  
Code: 25143/230



#### WHITE WINE GLASSES

Volume: 230 ml • 7.8 oz  
Diameter: 7.7 cm • 3 in  
Height: 20.3 cm • 8 in  
Weight: 100 g • 0.2 lbs  
Code: 25143/231



#### RED WINE GLASSES

Volume: 420 ml • 14.2 oz  
Diameter: 8.2 cm • 3.2 in  
Height: 19.3 cm • 7.6 in  
Weight: 160 g • 0.4 lbs  
Code: 25143/420



#### COCKTAIL GLASSES

Volume: 170 ml • 5.8 oz  
Diameter: 10.4 cm • 4.1 in  
Height: 16.3 cm • 6.4 in  
Weight: 120 g • 0.3 lbs  
Code: 25143/170



#### COUPE GLASSES

Volume: 120 ml • 4.1 oz  
Diameter: 11.2 cm • 4.4 in  
Height: 17 cm • 6.7 in  
Weight: 110 g • 0.2 lbs  
Code: 25143/120



#### COUPETTE GLASSES

Volume: 80 ml • 2.7 oz  
Diameter: 6.8 cm • 2.7 in  
Height: 15.5 cm • 6.1 in  
Weight: 80 g • 0.2 lbs  
Code: 25143/80



**For all those who crave a minimalistic edge with a modern twist. Bringing a touch of the divine to their evening drinks. SHADOWS stemware line brings an innovative elegance with iconic design. Teasing and playing with a sparkling luminescence and stunning optics. A bold addition to the signature SHADOWS collection.**







# Monochrome Edit Collection

DESIGNED BY CREATIVE DIRECTOR  
FRANTISEK JUNGVIRT

**Inspired by the soaring silhouette of the poplar tree, Monochrome vases perfectly capture the tree's slender stems and resilient beauty. Earthy tones softened with sandblasted glass.**

**The dramatic height and long sweeping curves of this piece marks the Monochrome vase as unique amongst KLIMCHI's collections.**

**Intended for grasses and long stem flowers, this exclusive new design finds harmony between the contemporary and the untamed beauty of nature.**



#### VASES

Volume: 1600 ml • 54.1 oz

Diameter: 10.5 cm • 4.1 in

Height: 38 cm • 15 in

Weight: 2 kg • 4.4 lbs

Code: 20214/38





# Linea Collection

DESIGNED BY CREATIVE DIRECTOR  
FRANTISEK JUNGVIRT



Finding beauty in the minimal. LINEA embodies a delicate harmony between the simple and the complex, seeking inspiration from modern architecture and purity of form. The calming elegance of clean shapes and refined lines creates a tableware line that transforms everyday dining into a celebration of contemporary minimalism. Handcrafted with artisanal expertise, each piece in the range is finely finished to perfection before it receives the KLIMCHI mark of excellence.

#### CARAFES

Volume: 1100 ml • 37.2 oz  
Diameter: 11.5 cm • 4.5 in  
Height: 24 cm • 9.5 in  
Weight: 0.8 kg • 1.8 lbs  
Code: 20212/1100



#### TUMBLERS

Volume: 250 ml • 8.5 oz  
Diameter: 8.6 cm • 3.4 in  
Height: 11 cm • 4.3 in  
Weight: 210 g • 0.5 lbs  
Code: 20242/250



#### SMALL BOWLS

Volume: 150 ml • 5.1 oz  
Diameter: 9 cm • 3.5 in  
Height: 7 cm • 2.8 in  
Weight: 200 g • 0.4 lbs  
Code: 20282/9



#### MEDIUM BOWLS

Volume: 520 ml • 17.6 oz  
Diameter: 13 cm • 5.1 in  
Height: 11 cm • 4.3 in  
Weight: 380 g • 0.8 lbs  
Code: 20272/13



#### LARGE BOWLS

Volume: 1050 ml • 35.5 oz  
Diameter: 16 cm • 6.3 in  
Height: 13 cm • 5.1 in  
Weight: 800 g • 1.8 lbs  
Code: 20262/16



#### SMALL CANDLES

Volume: 150 ml • 5.1 oz  
Diameter: 9 cm • 3.5 in  
Height: 7 cm • 2.8 in  
Weight: 400 g • 0.9 lbs  
Code: 1224/7



#### CANDLES

Volume: 520 ml • 17.6 oz  
Diameter: 13 cm • 5.1 in  
Height: 11 cm • 4.3 in  
Weight: 900 g • 2 lbs  
Code: 1224/11



# Felicity Collection

DESIGNED BY CREATIVE DIRECTOR  
FRANTISEK JUNGVIRT



**Simple elegance with a unique twist of the unexpected. The Felicity collection fuses contemporary design with the delicate work of the glass artisan in this range of elegant crackle vases. Radiant in sunlight, each colour has been carefully selected to evoke a vibrant flow of energy as well as an abundance of harmony and peacefulness for any interior.**

**VASES**

**Volume: 1200 ml • 40.6 oz**

**Diameter: 11 cm • 4.3 in**

**Height: 23 cm • 9.1 in**

**Weight: 0.8 kg • 1.8 lbs**

**Code: 20214/23**









# Marika Collection



The subtle curves of the Marika Collection blend well with both rustic settings and modern tablescapes. An alternative to heavier decors, Marika takes inspiration from the shapeless nature of liquids, allowing the boundary of the glass to become 'one' with the drink it holds. Finding beauty in its simplicity, the range is also perfect for holding flowers, from single elegant stems to lavish bouquets.







**MORNING  
NOON  
NIGHT**

MARIKA

A WAY OF LIVING

KLIMCHI



## JUGS

Volume: 2000 ml • 67.6 oz

Diameter: 20 cm • 7.9 in

Height: 22 cm • 8.7 in

Weight: 2 kg • 4.4 lbs

Code: 16184/2000



## TUMBLERS

Volume: 250 ml • 8.5 oz

Diameter: 8 cm • 3.2 in

Height: 9.5 cm • 3.7 in

Weight: 250 g • 0.6 lbs

Code: 20068/250



## VASES

Volume: 1800 ml • 60.9 oz

Diameter: 18 cm • 7.1 in

Height: 16 cm • 6.3 in

Weight: 1.2 kg • 2.7 lbs

Code: 8460/18



## LARGE VASES

Volume: 3000 ml • 101.4 oz

Diameter: 23 cm • 9.1 in

Height: 22 cm • 8.7 in

Weight: 1.5 kg • 3.3 lbs

Code: 8450/23



### EGG VASES

Volume: 3500 ml • 118.4 oz

Diameter: 15 cm • 5.9 in

Height: 23 cm • 9.1 in

Weight: 1.2 kg • 2.7 lbs

Code: 8215/23



### BOWLS

Volume: 1450 ml • 49 oz

Diameter: 23 cm • 9.1 in

Height: 10.5 cm • 4.1 in

Weight: 1.5 kg • 3.3 lbs

Code: 5232/23





# Royal Marika Collection

DESIGNED BY CREATIVE DIRECTOR  
FRANTISEK JUNGVIRT



Our range of Royal Marika bowls was inspired by the undulating curves of coastal waves carved into glistening stretches of sand. Gentle ripples radiate from the solid base, capturing and reflecting light, elevating the simple bowl to the level of glass art for the dining table. Delicately coloured in gentle shades of light green, rosaline and underlay blue, this is a centre piece worthy of the most discerning table stylists.



### LARGE BOWLS

Volume: 1850 ml • 62.6 oz

Diameter: 30 cm • 11.8 in

Height: 11 cm • 4.3 in

Weight: 3 kg • 6.6 lbs

Code: 50124/30



### MEDIUM BOWLS

Volume: 1350 ml • 45.7 oz

Diameter: 21 cm • 8.3 in

Height: 14 cm • 5.5 in

Weight: 1 kg • 2.2 lbs

Code: 50124/21



### SMALL BOWLS

Volume: 160 ml • 5.4 oz

Diameter: 12.2 cm • 4.8 in

Height: 8 cm • 3.1 in

Weight: 560 g • 1.2 lbs

Code: 50124/12



# Kugel Collection



A bold and stunning choice. The Kugel range is defined by its unorthodox design, taking inspiration from the dynamic interplay between geometric forms. Combined with the timelessness of Bohemian crystal, this range defies silence and subtlety. Offered in a vibrant array of shades, each piece of the collection is handcrafted by KLIMCHI's resident artisans with the utmost care and passion.

## JUGS

Volume: 2000 ml • 67.6 oz

Diameter: 20 cm • 7.9 in

Height: 22 cm • 8.7 in

Weight: 2 kg • 4.4 lbs

Code: 16184/2000



## EGG VASES

Volume: 3500 ml • 118.4 oz

Diameter: 15 cm • 5.9 in

Height: 23 cm • 9.1 in

Weight: 1.2 kg • 2.7 lbs

Code: 8215/23



## VASES

Volume: 1800 ml • 60.9 oz

Diameter: 18 cm • 7.1 in

Height: 16 cm • 6.3 in

Weight: 1.2 kg • 2.7 lbs

Code: 8460/18



## LARGE TUMBLERS

Volume: 280 ml • 9.5 oz

Diameter: 8 cm • 3.1 in

Height: 9.5 cm • 3.7 in

Weight: 210 g • 0.5 lbs

Code: 2133/280



## MEDIUM TUMBLERS

Volume: 210 ml • 7.1 oz

Diameter: 7.5 cm • 3 in

Height: 8.2 cm • 3.2 in

Weight: 210 g • 0.5 lbs

Code: 2025/210



# Beer Mugs

DESIGNED BY CREATIVE DIRECTOR  
FRANTISEK JUNGVIRT



Immersed within a culture rich with the tradition of artisanal beer brewing, Czech glass artists have long known the secret to crafting the superior beer glass. Inspired by the curving bow of ancient casks, the Beer Mugs collection inspires both tension and dialogue between enshrined tradition and contemporary craft. Hand cut with master precision and expertly shaped at our studio, these pieces are destined to awaken the avant-garde in any beer connoisseur.

## BEER MUGS

Volume: 500 ml • 16.9 oz

Diameter: 16 cm • 6.3 in

Height: 14 cm • 5.5 in

Weight: 1 kg • 2.2 lbs

Code: 283312/500



## SMALL BEER MUGS

Volume: 300 ml • 10.1 oz

Diameter: 13 cm • 5.1 in

Height: 12 cm • 4.7 in

Weight: 520 g • 1.2 lbs

Code: 283312/300





# Crust Collection

DESIGNED BY CREATIVE DIRECTOR  
FRANTISEK JUNG VIRT



Enveloping and enfolding, the Crust collection offers a timeless luxury drinking experience to even the most discerning of hosts. Inspired by the unique movement of wood grains beneath bark. Deep amber tones and aquatic blues denote a rich and intense luminosity, ideal for late night aperitifs outdoors or by the fire in the colder months.



### CARAFES

Volume: 1100 ml • 37.2 oz  
Diameter: 10.5 cm • 4.1 in  
Height: 21.7 cm • 8.5 in  
Weight: 720 g • 1.6 lbs  
Code: 20213/1100



### SHOT GLASSES

Volume: 55 ml • 1.9 oz  
Diameter: 6.5 cm • 2.6 in  
Height: 5.5 cm • 2.2 in  
Weight: 180 g • 0.4 lbs  
Code: 20072/130



### TUMBLERS

Volume: 250 ml • 8.5 oz  
Diameter: 8.8 cm • 3.5 in  
Height: 9.7 cm • 3.8 in  
Weight: 220 g • 0.5 lbs  
Code: 20070/250



### DRINKING GLASSES

Volume: 200 ml • 6.8 oz  
Diameter: 7.5 cm • 3 in  
Height: 7.8 cm • 3.1 in  
Weight: 160 g • 0.4 lbs  
Code: 20071/200



# Klimchi Candles Collection

DESIGNED BY CREATIVE DIRECTOR  
FRANTISEK JUNGVIRT

Captivate the senses. KLIMCHI's scented candle collection is the epitome of luxury and exclusivity. Its sophisticated fragrance composition will delight even the most demanding. Each scented candle is hand-poured into an artisan-crafted glass vessel. The wooden wick is genuine Cocobolo hardwood, carefully sourced and crafted to create a slow burning gentle flame. Each candle is richly infused with a delicate mix of essential oils and high grade fragrance to bring any space in harmony with nature.



## KLIMCHI CANDLES

Volume: 250 ml • 8.5 oz

Diameter: 10 cm • 3.9 in

Height: 11 cm • 4.3 in

Weight: 1.5 kg • 3.3 lbs

Code: 1221/11

### NIGHTFALL VANILLA

Earthy notes of tobacco leaves and the smooth sweetness of vanilla.



### POPLIN AFFAIR

Scent of fresh cotton and clear vast skies.



### PINE PARADISE

Authentic sweet aroma of honey, vanilla and caramel together with traditional gingerbread and star anise.



### ROSE LUSH

Velvet sweet notes of rose balanced with a warm citrus twist.



### LEMON BLISS

Uplifting aroma of zesty citrus notes and subtle woody undertones.



# Drama Collection

DESIGNED BY CREATIVE DIRECTOR  
FRANTISEK JUNGVIRT













Inspired by the decadence of the Opera and the golden beauty of the Music Hall. Our DRAMA collection is designed to transform a silent space into the sweeping opulence of a grand theatre. This range is defined by its undulating surface detail, creating a stunning synthesis of glittering light and vivid colour. These sweeping vases demand only the most lavish bouquets. Expecting nothing less than a standing ovation.

#### DRAMA VASES

Volume: 2500 ml • 84.5 oz

Diameter: 17 cm • 6.7 in

Height: 32 cm • 12.6 in

Weight: 2 kg • 4.4 lbs

Code: 1021/32



#### LARGE DRAMA VASES

Volume: 4500 ml • 152.2 oz

Diameter: 17 cm • 6.7 in

Height: 42 cm • 16.5 in

Weight: 3 kg • 6.6 lbs

Code: 1021/42



# Fugu Vases Collection

DESIGNED BY CREATIVE DIRECTOR  
FRANTISEK JUNGVIRT



**The translucent glass mirrors the ocean's play of light, while delicate hobnail patterns evoke the mesmerising texture of sea bubbles. Fugu vases draw inspiration from the graceful movements of the puffer fish. Each piece is a harmonious fusion of timeless, classic design and a sleek, modern aesthetic, artfully capturing the fluidity of underwater movement.**

**VASES**

**Volume: 650 ml • 22 oz  
Diameter: 11.5 cm • 4.5 in  
Height: 30 cm • 11.8 in  
Weight: 1.4 kg • 3.1 lbs  
Code: 80923/30**



# Fairytale Collection

DESIGNED BY CREATIVE DIRECTOR  
FRANTISEK JUNGVIRT



Allow the joyful character of Fairytale to whisk you away into a dream world of wonder. This playful collection takes KLIMCHI's classic Hobnail design and fuses it with the wild and surreal imagination of Japanese iconic artist Yayoi Kusama. Each piece is unique. Irregular. Irreplaceable. A piece of hand-shaped art.

#### CARAFES

Volume: 750 ml • 25.4 oz  
Diameter: 12.5 cm • 4.9 in  
Height: 25 cm • 9.8 in  
Weight: 1.4 kg • 3.1 lbs  
Code: 12229/750



#### TUMBLERS

Volume: 210 ml • 7.1 oz  
Diameter: 9 cm • 3.5 in  
Height: 10 cm • 3.9 in  
Weight: 350 g • 0.8 lbs  
Code: 22229/210



#### VASES

Volume: 1000 ml • 33.8 oz  
Diameter: 19 cm • 7.5 in  
Height: 23 cm • 9.1 in  
Weight: 1.4 kg • 3.1 lbs  
Code: 82229/23



#### BOWLS

Volume: 1200 ml • 40.6 oz  
Diameter: 22 cm • 8.7 in  
Height: 15.5 cm • 6.1 in  
Weight: 1 kg • 2.2 lbs  
Code: 52229/22



KLIMCHI COLLECTIONS

# KLIMCHI

## PHOTO CREDITS

MICHAL KERTÉSZ  
ANNA PLESLOVÁ  
KATARÍNA HUDAČINOVÁ  
LUCY RICHARDS  
DANILO FLOREANI  
KAROLÍNA MATUŠKOVÁ  
FILIP ŠVÁCHA  
SHOTBY.US

## PHOTO LOCATIONS

ANDAZ PRAGUE  
AUGUSTINE HOTEL PRAGUE  
GLASSIMO GALLERY  
HOME IN HEIDELBERG GERMANY  
VINOHRADY THEATRE

## GRAPHIC DESIGN

JOSEFINA KARLÍKOVÁ  
MATEJ VOJTUŠ

## PRINT

TISKÁRNA PROTISK, S.R.O.

## PRAGUE

2024

KLIMCHI S.R.O.  
MIROSLAVA HAJNA 740/2  
PRAGUE 9, 199 00  
CZECH REPUBLIC  
VAT NO. CZ08326452

HQ:  
PALACKÉHO 42  
KAMENICKÝ ŠENOV, 471 14  
CZECH REPUBLIC

FB  
KLIMCHI

IG  
@KLIMCHISTUDIO

PINTEREST  
KLIMCHI

LINKEDIN  
KLIMCHI

[WWW.KLIMCHI.COM](http://WWW.KLIMCHI.COM)





**HOBNAIL**

**SHADOWS**

**MONOCHROME EDIT**

**LINEA**

**FELICITY**

**MARIKA**

**ROYAL MARIKA**

**CRUST**

**BEER MUGS**

**KUGEL**

**DRAMA**

**FUGU VASES**

**FAIRYTALE**



Co-funded by  
the European Union